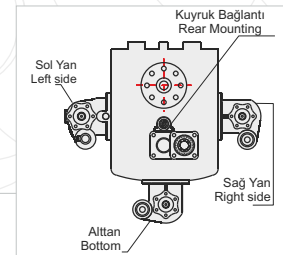
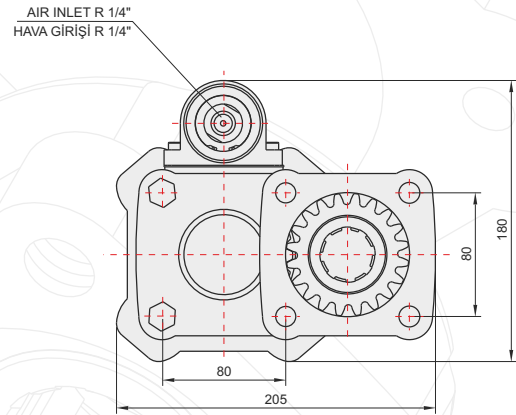
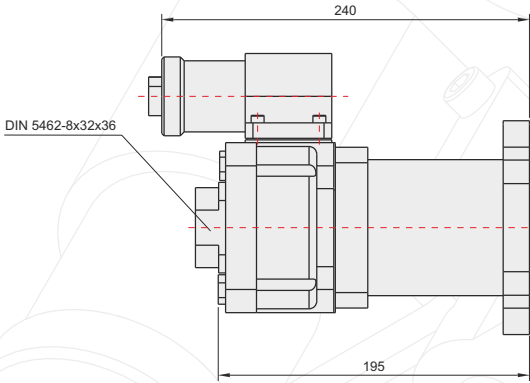
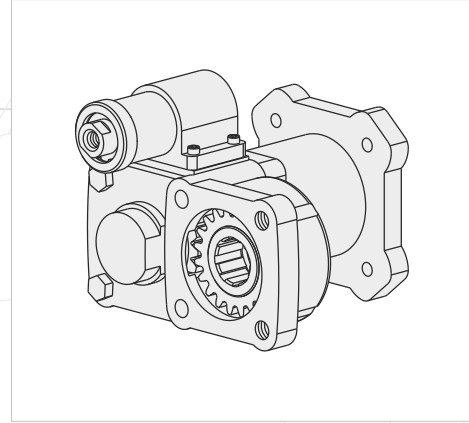


50510321



GENEL BİLGİLER/GENERAL DATA

P.T.O. KODU / P.T.O. CODE	50510321	
Tork / Torque	26,5 Kgm	260 Nm
Güç(1000 rpm) / Power	32,9 Hp	24,5 Kw
Devir / Speed	900 rpm	900 rpm
Oran / Ratio	1/1,2	1/1,2
Ağırlık / Weight	14 kg	30,9 lb
Bağlantı / Mounting	Kuyruk	Rear
Kumanda / Control	Havalı	Pneumatic
Dönüş / P.T.O. Rotation	Sol - ISO	Left - ISO

Seçeğinizin pompanın dönüş yönü, P.T.O. dönüş yönü ile ters olmalıdır.
The rotation of the choosen pump has to be opposite with the rotation of P.T.O.

P.T.O. montaj edildikten sonra ana şanzıman yağını tamamlayın.
Fill the oil of the gear box after mounting the P.T.O.

Ana Şanzıman / Gearbox	Kullanılan Bazı Araçlar / Used Vehicles
EATON-FULLER RT-RTF-RTO-RTX-RTOF-RTOX-MRT1160A-B RT-RTX-TRO-RTL-RTOO-RTOOF-FTOOX 11509-14613-15613-15615-A-B-H / RTO-RTX 11709,12609/RTO11608 LL / RTX 11613 B/RT-RTX 11709 H-B / RT-RTF910/RTO 910/ RT 1110/ RTO 1110/ RT 7609/ RTO-RTX 7609/ RT-RTO7613/ RT-RTF 9509 A-C RT-RTF-MRT-MRTO-RTO-RTOF 9509,9513, 9710 A-B RT-RTO-RTX 12509,12513, 12709 H, 12710 B / RT- RTF- RTO-RTOF- RTLO-RTX 14608 LL, 14609,14613,14710 E	19.361-26.321-26.240-26.280 MAN/ 180.24-180.26-190.26-190.30-190.35-190.42-198.38-240.36-330.26-330.30-330.35-380E30 IVECO270-26 FATİH BMC / DAF 85-2605-2800-2815-3030-3300-3330-3600-4400/ ERF E6-E8-E12-EC /LEYLAND / FODEN 4000 / MAGIRUS 19.320-30.280 MAN / FIAT 619-697

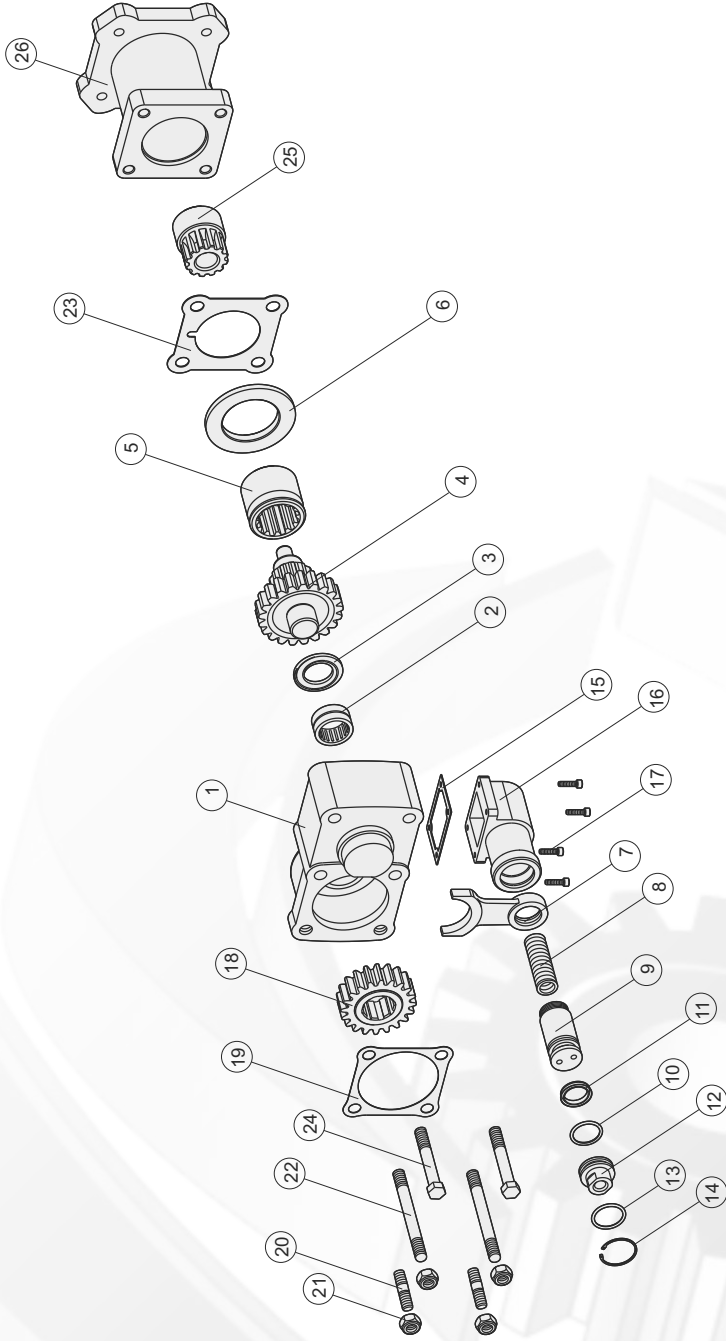


KUYRUK/REAR

FULLER 11609

POWER TAKE OFF

P.T.O.

ÜRÜN MONTAJ ve PARÇA LİSTESİ
PRODUCT ASSEMBLY and PART LIST

FULLER 11609

Adet	Parça No	Parça Adı	Kod
1	1	Zf2 Gövde	50510321-01
1	2	NK30-20 Rulman	50510321-02
1	3	31x52x4 Bronz Pul	50510321-03
1	4	Grup Dişlisi	50510321-04
1	5	Kavrama Dişlisi	50510321-05
1	6	Zf2 Merkezleme Pulü	50510321-06
1	7	Hilal	50510321-07
1	8	Pnömatik Piston Yayı	50510321-08
1	9	Pnömatik Piston	50510321-09
1	10	3x27 O-ring	50510321-10
1	11	33x25x5,5 Nutring	50510321-11
1	12	Pnömatik Kapak	50510321-12
1	13	29,75x3,53 O-Ring	50510321-13

Adet	Parça No	Parça Adı	Kod
1	14	472-36 Segman	50510321-14
1	15	Pnömatik Kovan Contası	50510321-15
1	16	Pnömatik Kovan	50510321-16
4	17	M5x20 Inbus	50510321-17
1	18	8x20 Dişli	50510321-18
1	19	Conta	50510321-19
2	20	M12x45 Aks Saplama	50510321-20
4	21	M12 Somun	50510321-21
2	22	M12x120 Aks Saplama	50510321-22
1	23	Conta	50510321-23
2	24	M12x90 Civata	50510321-24
1	25	11609 Kavrama	50510321-25
1	26	11609 Plaketa	50510321-26
35		TOPLAM PARÇA SAYISI	